



Energy Resource Booklet
Overview

Clouded Climate

Who Wants to be an Energy
Heir

Taking Steps to Reduce our
Footprints

Energy Driven

Change in Migration Patterns
Part 1

Change in Migration Patterns
Part 2

Change in Migration Patterns
Part 3

Severe Weather

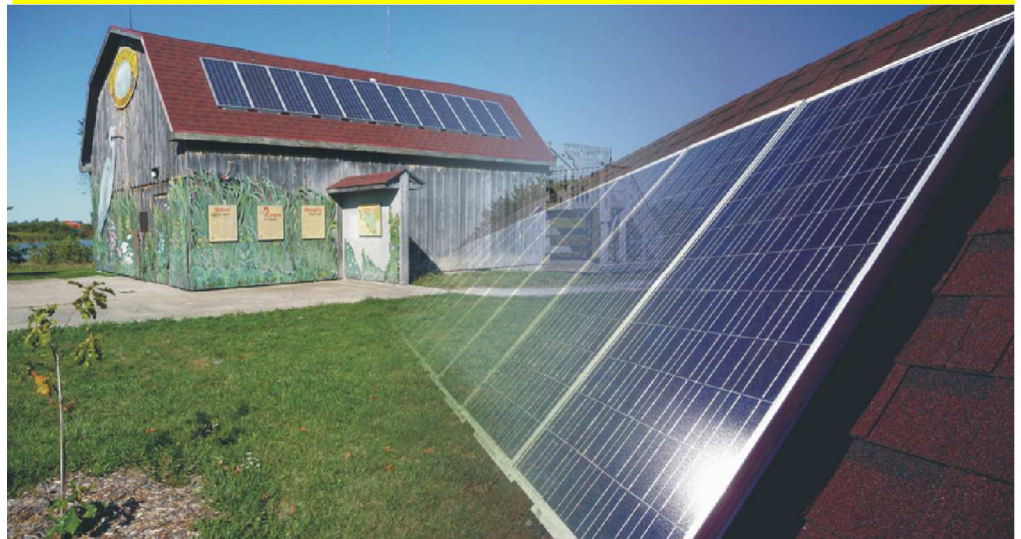
References

To book a program:

Call Bev Wannick
519-776-5209 ext. 308
fax: 519-776-8688
email: bwannick@erca.org

Sustainable Energy for Sustainable Living

Grade 9-10 Energy Program



Harnessing Solar Power at Hillman Marsh Conservation Area, Leamington, Ontario

Get Connected to Energy Use, Curriculum and the Environment:

Sustainable Energy –Sustainable Earth Programs at Your Classroom

Gr. 9-10 - In Your Classroom

Program length: 1 hour 20 minutes

Program Cost: \$110.00 (maximum 30 per program)

Explore how energy use, and its sources, our Carbon Footprint, Global Warming and Climate effect the sustainability of local ecosystems, watersheds, and resource management using doplar radar footage of hawk migration, water testing, and maps. Take part in experiments using spectrometers, and envirosapes.

