



Teacher Resource Booklet  
Overview

Wild Energy Trails

Sunlight for Farms  
Crop Survival

Tomato Survival Graphs

Wheat Survival Graphs

Pepper Survival Graphs

Corn Crop Survival Graphs

Crops in Climate Change

Wildlife Go Solar

Build a Solar Dog House

The Age of Oil

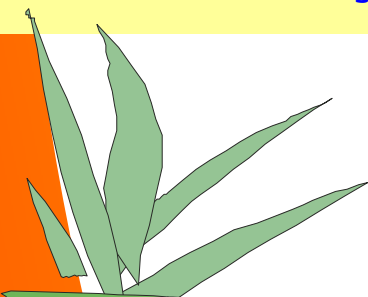
Energy Wise

Energy Saver Challenge

References

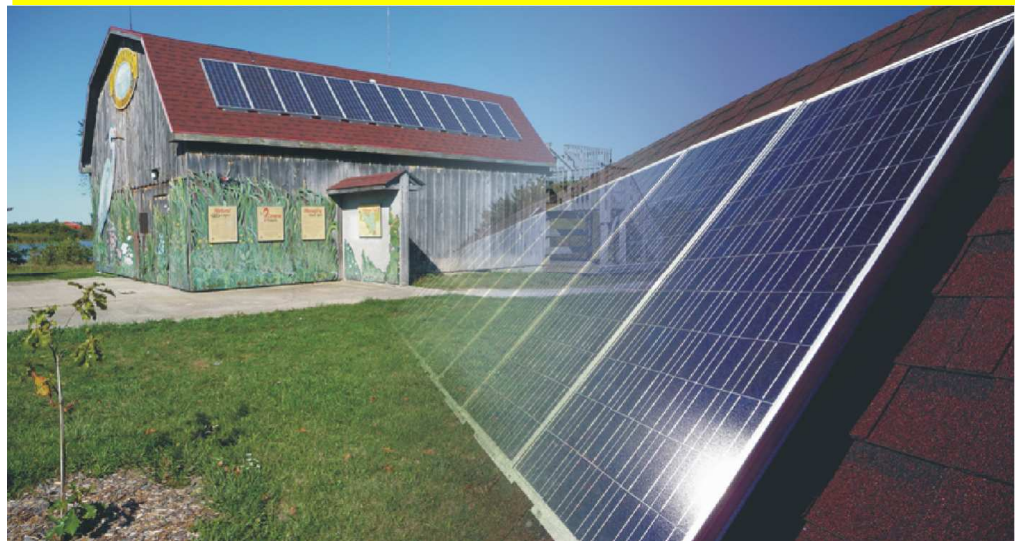
**To book a program:**

Call Bev Wannick  
519-776-5209 ext. 308  
fax: 519-776-8688  
email: [bwannick@erca.org](mailto:bwannick@erca.org)



# Go Solar

## Grade 5 Energy Programs



Harnessing Solar Power at Hillman Marsh Conservation Area, Leamington, Ontario

### Get Connected to Energy Use, Curriculum and the Environment: Go Solar Programs at Hillman Marsh Conservation Area or Your Classroom

Gr. 5 - Go Solar and Wildlife Organ Systems at Hillman Marsh

Experiment with a solar car, go on a renewable and non-renewable energy scavenger hunt and discover wildlife energy trails. Head down the marsh trail to see spring or fall wildlife, catch water insects in the marsh (or fall forest hike and catch log life at Kopegaron Woods.) and compare the organ systems of wildlife. **Program length: 10am to 2pm**

**Program Cost: \$225.00 per group (maximum 30 per group)**

Gr. 5 - Go Solar, Wastewater and Wildlife Organ Systems

In Your Classroom

Experiment with a solar car, take part in a renewable and non-renewable energy talk and activity, water treatment experiment using an enviroscape, and compare the organ systems of wildlife with skeletons and animal parts.

**Program: 1 hr. 45 min.**